



## General Information



Deb Dalton

Airlie Boat Hire

[info@airlieboathire.com.au](mailto:info@airlieboathire.com.au)

0419 143 049

# **Airlie Boat Hire General Info**

	Page No
<b>1. Tides</b>	<b>2</b>
<b>2. Public Moorings</b>	<b>3</b>
<b>3. Reef Protection Markers and Buoys</b>	<b>5</b>
<b>4. Map of Islands and Bays</b>	<b>6</b>
<b>5. Snorkelling Spots</b>	<b>7</b>
<b>6. Fishing Spots</b>	<b>9</b>
<b>7. Water Sports Map</b>	<b>11</b>
<b>8. Stingers, Box Jellyfish, and Irukandji</b>	<b>12</b>
<b>9. Emergency Contact Numbers</b>	<b>14</b>
<b>10. Refuelling</b>	<b>14</b>
<b>11. Troubleshooting for the boat</b>	<b>15</b>
<b>12. Anchoring</b>	<b>15</b>
<b>13. Tips for a Tropical Holiday</b>	<b>16</b>
<b>14. Camping on the islands</b>	<b>17</b>
<b>15. Arriving from a Cruise ship</b>	<b>18</b>

## **Tides**

The Whitsundays experience high tides up to 6 meters that recede rapidly. Never beach a boat on an outgoing tide, as the water will quickly recede and strand the boat until the next high tide. Consult our staff regarding your daily plans so they can advise you of optimal times and locations based on the tides.

Tide times can be found at;

[http://www.bom.gov.au/ntc/IDO59001/IDO59001\\_2024\\_QLD\\_TP025.pdf](http://www.bom.gov.au/ntc/IDO59001/IDO59001_2024_QLD_TP025.pdf)

## **Public Moorings**

Public moorings are available for use in many popular locations around the reef.

However, there are limits regarding wind speeds, times and vessel lengths allocated to colour coded bands on the public moorings.

When hiring either our licenced boats, such as the Centre Cab, Sportsrider, Yellowfin or McLay you need to be looking for the brown coded mooring. You can use the Yellow, Green, Blue and Red ones too.

There are other rules you must be aware of when using these moorings they are as follows.

- Only 1 vessel per mooring
- Rafting up, where you link more vessels together in a chain to a mooring.
- Moving or altering the mooring in anyway
- Exceeding the time limits
- Not following the instructions on the mooring.



A map of the current mooring locations can be found on the next page. For exact GPS locations and more information can be found at <https://elibrary.gbrmpa.gov.au/jspui/retrieve/06d8906b-5930-4e01-b2ab-fddaf6a7b905/Whitsundays-Public-Moorings-Map-May-2022.pdf>



**Australian Government**  
**Great Barrier Reef**  
**Marine Park Authority**



## Reef Protection Markers

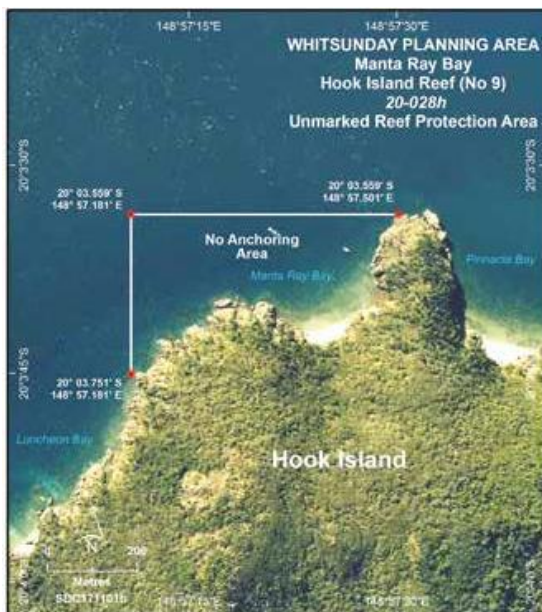
These markers have been put in place to help protect some of our very fragile reefs located in some of our bays and fringing coral reefs around the islands.

They are a white pyramid shape with a blue line and writing.



You will always find at least 2 of these or more in a bay.

If you were to draw an imaginary line between each marker, this means you can not anchor your vessel beyond that imaginary line. You may enter a NO ANCHORING AREA, but only when you are mooring on to a beach. No anchor must be used in the water!

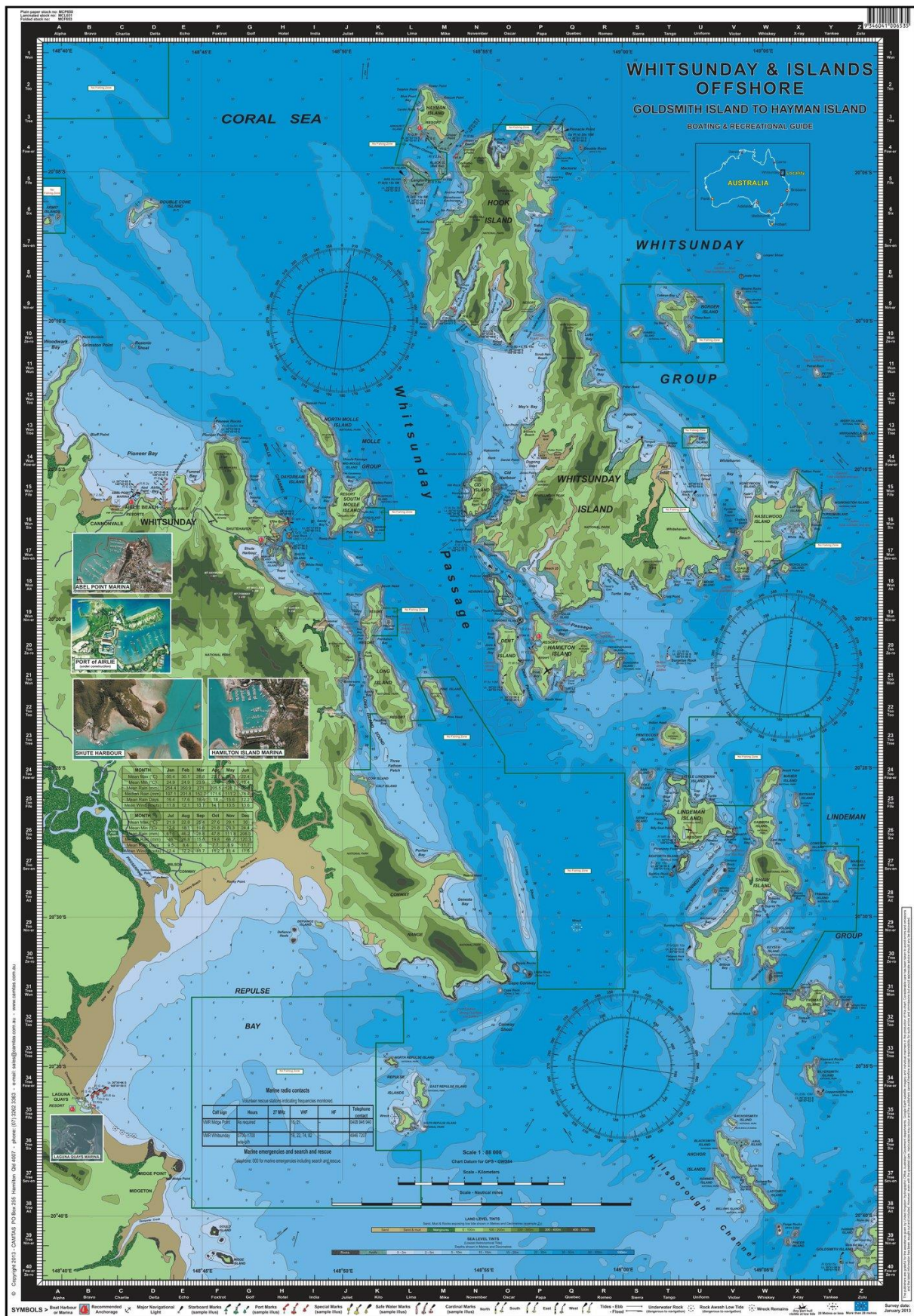


## Unmarked Reef Protection Areas

There are 2 unmarked no-anchoring areas in the area, the one you need to pay attention to is Manta Ray Bay. Please use the moorings provided there.

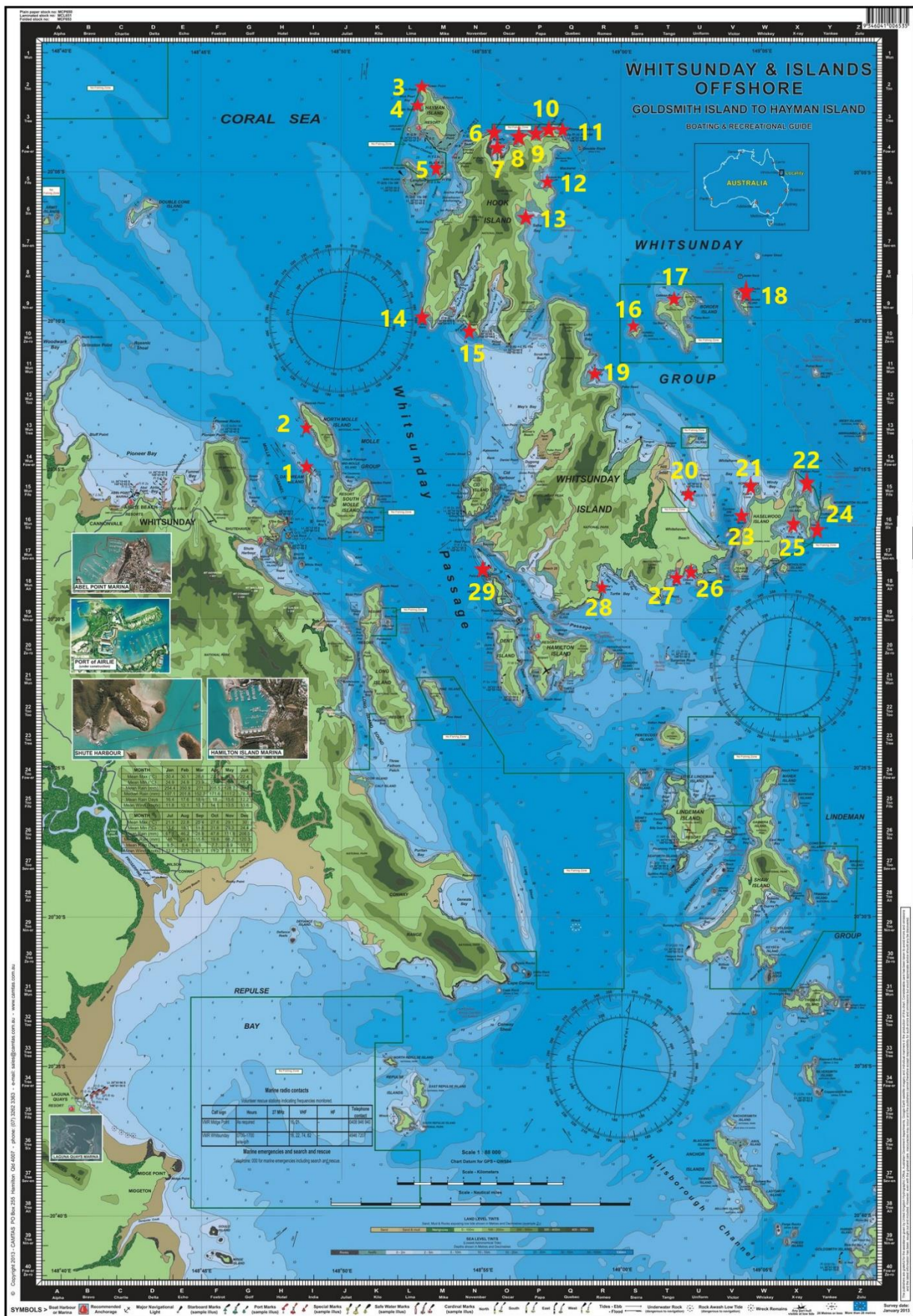


## Map of Islands and Bays





## Snorkelling Spots

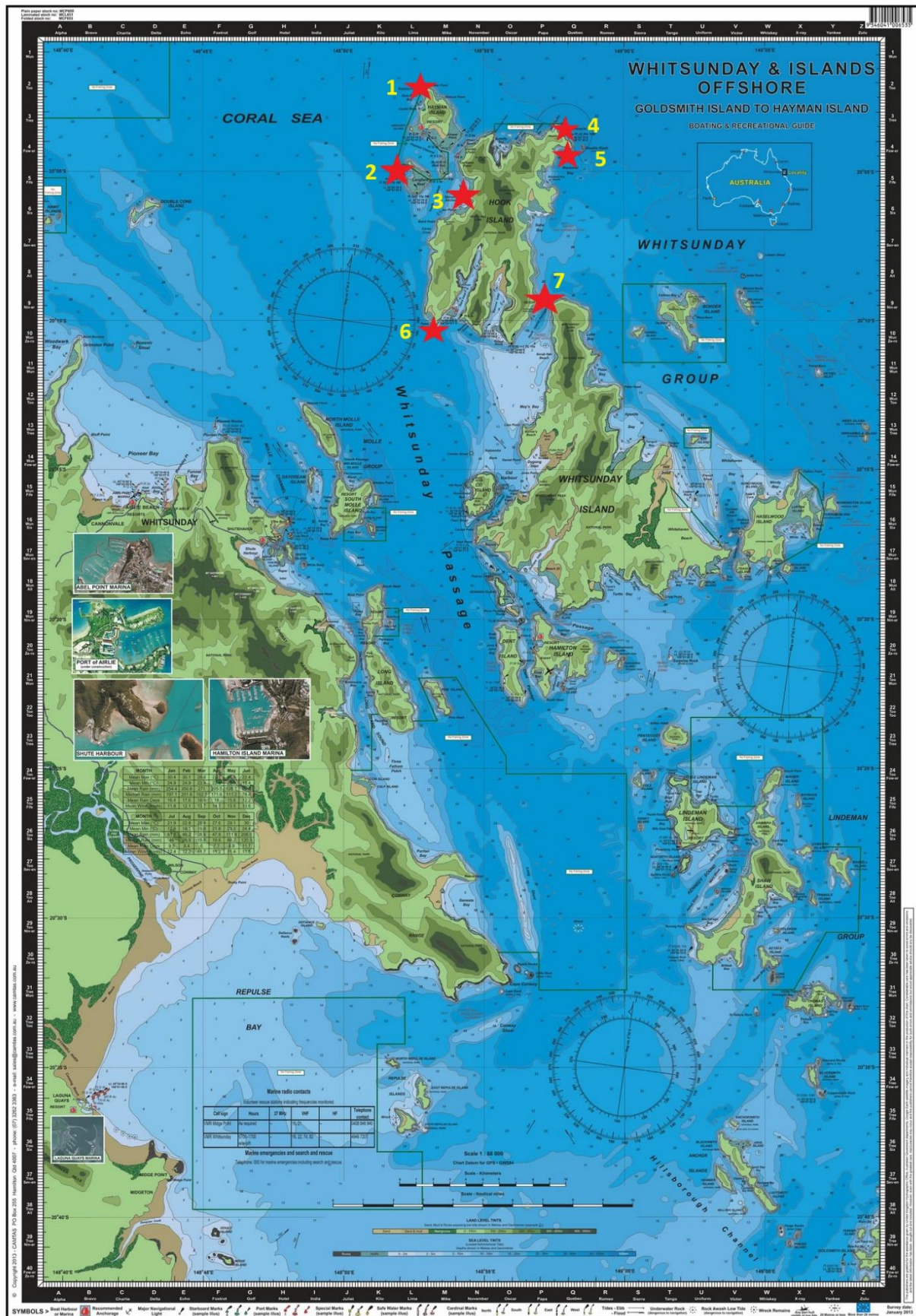




## **Suggested Snorkelling Spots**

1. Sunlovers Bay, Daydream Island
2. West Mt Sharp, North Molle Island
3. Dolphin Point, Hayman Island
4. Castle Rock, Hayman Island
5. Bali Hai, Black Island & Langford Reef
6. Alcyonaria Point, Butterfly Bay, Hook Island
7. Butterfly Bay, Hook Island
8. Maureen's Cove, Hook Island
9. Luncheon Bay, Hook Island
10. Manta Ray Bay, Hook Island
11. Pinnacle Bay, Hook Island
12. Mackerel Bay South, Hook Island
13. Saba Bay, Hook Island
14. False Nara, Hook Island
15. Ravens Cove, Hook Island
16. North East, Dumbell Island
17. CATERAN Bay, Border Island
18. Minstrel Rocks, Deloraine Island
19. Peter Bay, Whitsunday Island
20. Lagoon Rock, Whitsunday Island
21. Katies Cove, Hazelwood Island
22. North of Lupton Island
23. South Chalkies Beach, Hazelwood Island
24. Trochus Bay, Lupton Island
25. South Lupton Island
26. Chance Bay, Whitsunday Island
27. Theo's Point, Chance Bay, Whitsunday Island
28. Turtle Bay, Whitsunday Island
29. North Henning Island

## Fishing Spots





When fishing -

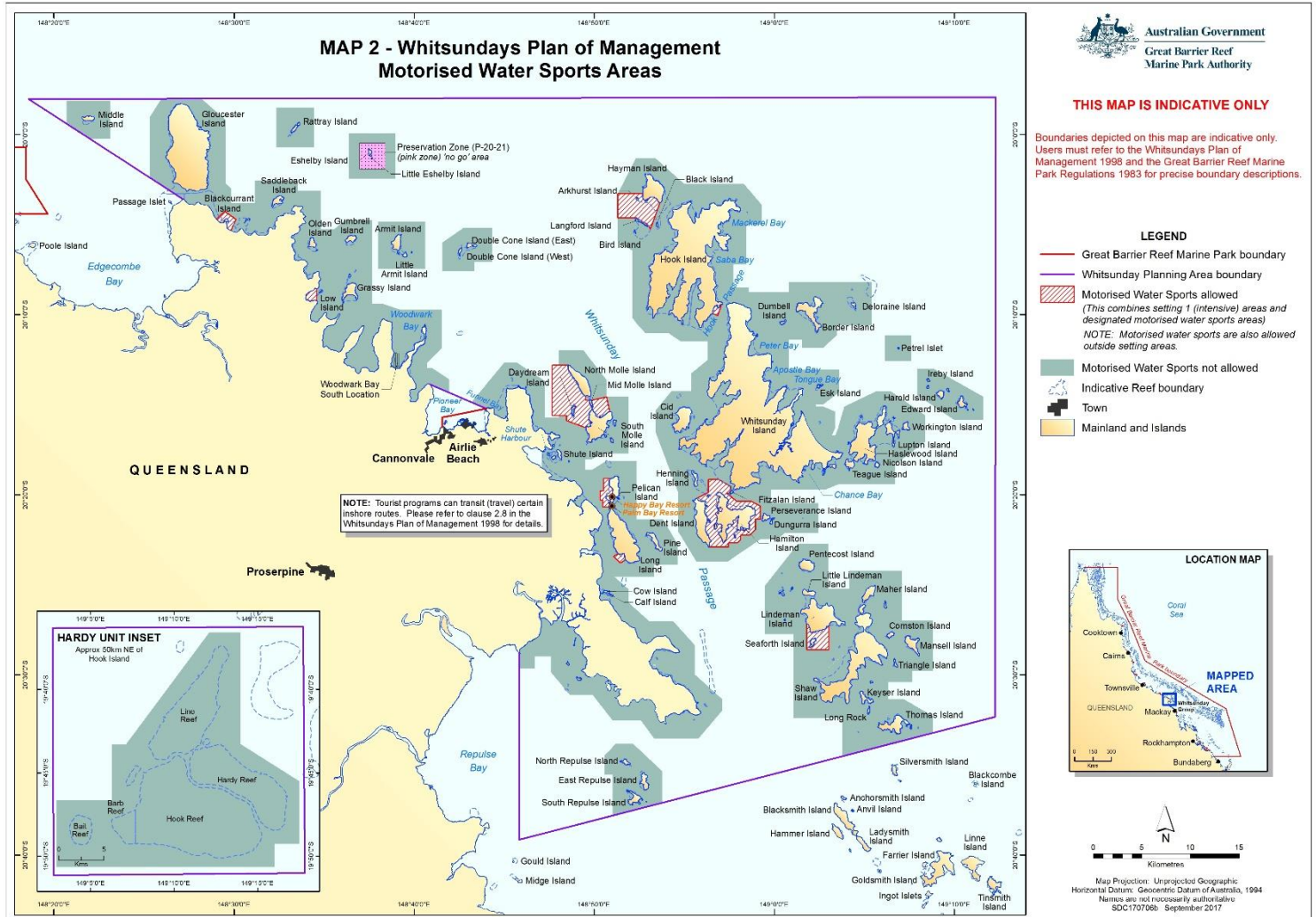
- Check that you are not in a **green zone**. We have a green zone map onboard.
- Keep your fishing line away from the motor.

See map on previous page. Here are a few good fishing spots. There are plenty more. Ask our friendly staff.

1. Dolphin Point, Hayman Island
2. Bird Island, Langford Reef
3. Stonehaven Anchorage, Hook Island
4. Pinnacle Point, Hook Island
5. Mackerel Bay, Hook Island
6. Nara Point, Hook Island
7. Hook Passage, between Hook Island and Whitsunday Island

# Water Sports Map

Here in the Whitsundays our Marine Parks have designated areas allocated for water sports activities. See attached map.





## **Marine Stingers, Box Jelly Fish and Irukandji**

When in the Whitsundays, there are some hazards that can be managed with a little extra caution. Typically, stinger season runs from November through to May, though stings have been recorded at all times of the year.

Prevention is better than the cure, so as not to ruin your holiday you should wear a stinger suit and wear reef shoes if walking near coral. The chances of being stung are small, but better to be prepared & have some knowledge to minimise the risk. Stinger suits are also great protection from the harmful UV rays & help prevent sunburn.

.

### **Irukandji**

They can be found around the coastline, reef and islands. The Irukandji are very small and not easily seen. The sting can be relatively mild, but in rare cases of an underlying systemic medical problem, can then be life threatening.



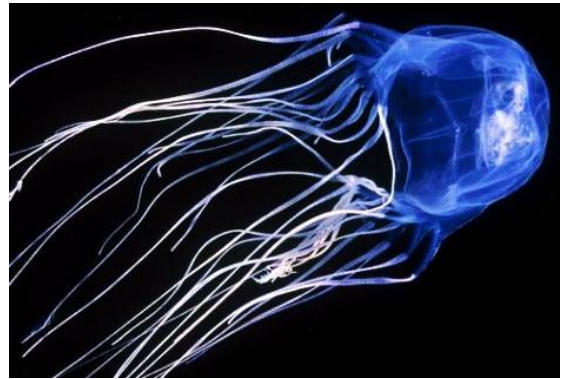
Typically, 20-30 minutes after being stung the symptoms can be: lower backache, overall body pain and muscular cramps, nausea/vomiting, chest pain/difficulty breathing, pins and needles or severe headache.

A sting is rarely evident, if present, usually a pale red mark with goose pimples or sweating.

When the northerly winds are consistent, there are usually a high risk of stingers.

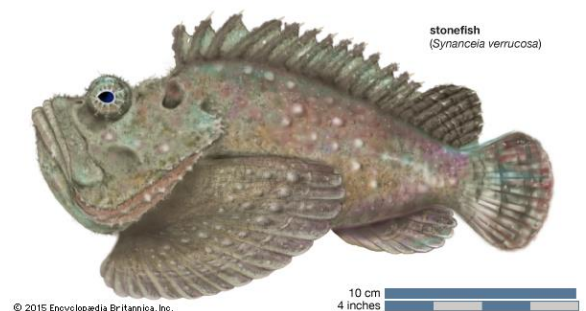
## **Box Jellyfish**

Mainly found around coastal areas but are found offshore also. Enter the water slowly to allow the box jellyfish to move away. The head is shaped like a box, and they have tentacles up to 3 metres long. A sting from the box jelly is very painful and can cause respiratory distress and cardiac arrest within minutes. Douse with vinegar before removing tentacles, if possible. Welts will appear when stung.



## **Stonefish**

It's unlikely that you will ever see one as they are well disguised by blending into the coral. If trodden on barefoot the dorsal spines will deliver an extremely painful wound. Please wear reef shoes and tread carefully. If stung immerse in warm to hot water to help alleviate pain and seek medical attention.



## **Cone Shells**

They are a beautifully patterned shell often covered with a green-brown slime. A few of these species are highly venomous and very dangerous to man. DO NOT pick up cone shells with your bare hands. If stung, treat with pressure immobilisation, and seek medical attention promptly!





## **Emergency Contact Numbers**

VMR WHITSUNDAYS	07 4946 7207	OR CH 16
VMR MACKAY	07 4955 5448	OR CH 16
BOB DALTON	0419 144 807	
DEB DALTON	0419 143 049	
PROSERPINE HOSPITAL	07 4813 9400	

## **Refuelling Locations**

Please call or radio locations before entering marina for refuelling.

Coral Sea Marina  
07 4946 2400  
VHF Channel - 9

Hamilton Island Marina  
07 4946 8353  
VHF Channel - 68

## **Troubleshooting for the boat**

If the engine won't start:

- Check throttle is in neutral.
- Check kill switch, pull out and put back.

Low battery alarm:

- Switch yellow battery isolator on.

## **Anchoring**

- Always anchor in enough water
- Check tides.
- Put plenty of rope out.
- Check rope and chain is attached to the boat.
- Use the correct anchor.
- If camping, please use 2 anchors.



**Reef Anchor**



**Sand Anchor**



**Sarca Anchor**

Good holding power – only to be used with sandy floor



## **Tips for a Tropical Holiday**

**Sunscreen** – Wear SPF 50 sunblock to avoid a nasty sunburn. Apply continuously during the day, particularly when swimming and snorkelling. The reflection off the water can be harsh.

**Take a Hat** – A wide brimmed hat is best for extra protection as well as your sunscreen.

**Polarised Sunglasses** – These are best as they reduce reflection of the water and protect your eyes.

**Footwear** – Always have a pair of reef shoes on hand to prevent cuts on coral.

**Stinger Suits** – They protect you from stingers and sunburn.

**First Aid Kit** – This is essential in case of any mishaps.

**Food and drinks** - make sure you pack enough food and water for the whole day.

## **Camping on the islands**

Many people choose to take our boats out overnight or for a few days to camp overnight on the islands. There are many beautiful spots that you can go depending on the weather.

Some of the important things when taking the boat camping are;

- The boat is only permitted to be driven in daylight hours.
- The boat must be refuelled at the end of each day, the fuel tank is sufficient for 1 day. You can refuel at either Hamilton Island Marina or Coral Sea Marina. If you run out of fuel, the towing costs will be at your expense and is determined by the relevant towing/rescue company.
- To allow for the extra weight of camping gear, food, and drinks etc, the maximum number of persons on the boat is 2 less than advertised.
- We highly recommend going to spots where there are moorings to tie onto, this is to prevent the anchor dragging and allow for the tides to rise/fall overnight without the boat getting stranded. If anchoring, 2 anchors must be used overnight.

You do require a permit to camp on the islands; all of the information can be found on the link below. Follow this link:

<https://qpws.usedirect.com/QPWS/Facilities/SearchView.aspx>

## **Arriving off a Cruise Ship?**

We cater to guests coming off cruise ships, however a little more planning is required.

## **How do I get from the port to Airlie Boat Hire?**

Our boats are located at Coral Sea Marina. Cruise ship tenders disembark passengers at either Port of Airlie or Shute Harbour. Since it takes time to offload all passengers, we recommend reserving priority tender boarding to secure an early departure. Pre-booking a taxi or transfer to Coral Sea Marina is ideal, as rideshares are unavailable here. Recommended transfer companies include:

Heart of the Reef Shuttle – 07 4948 2385

Airlie Beach Hotel Transfer Bus – 0460 020 832

Need a Ride Whitsunday – 0459 156 037

13CABS – 13 2227 / 07 4944 4931

## **What am I going to eat for the day?**

As you cannot bring any food off the cruise ship, we recommend doing a 'Click and Collect' order from Woolworths Airlie Beach and getting your transfer or Taxi to stop here on the way. All our boats have eskies on board, and we sell ice to keep your food/drinks cold for the day.

## **Will we be able to go to Whitehaven Beach?**

Yes, you can make it to all the larger Islands on our larger licenced boats and be back in time for the ship's departure. This is only possible if you do get the one of the earliest tenders and get to us as soon as you can. At an average speed of 20knots with low winds, it takes around 1-1.5hrs to get there.



### **Other Important information**

As most guests have limited reception while on the boat, we cannot contact you until you arrive in port. To ensure a smooth booking process and more time on the water, please confirm all details for your rental equipment (such as stinger suits, snorkels, children's life jackets, etc.) before departing on your cruise. Once your order is finalised, we will charge the full payment to your card. We understand plans can change between departing and arriving in Airlie Beach. If inclement weather is expected, we will notify you the afternoon before your tour via text or email. Inline with our bad weather cancellation policy, you can either reschedule or receive a full refund (minus any booking fees) in these cases.

We are always contactable via phone, WhatsApp or email if you need to get in contact with us at any stage.

If you have any questions, special requests, or need help booking or planning your trip, please contact us. We are always happy to assist you and ensure you have the best experience exploring everything the Whitsundays has to offer.